

Peculiar Works Project in association with The Municipal Art Society of New York  
presents

# JANES CALLING

A Site-Specific, Virtual Performance for Jane's Walk 2021

**6pm, Friday, May 7, 2021**

Created by

**Ralph Lewis** and the Cast  
(in order of appearance)

*No Other Recipe*  
*Cities Need Old Buildings*  
*Gentrification*  
*Old Quarters, New Uses*  
*Sidewalks and Doorsteps*  
*Community Hearts*

Stage Managed by  
**Heather Olmstead**

**Caiti Lattimer**  
**Ashleigh Awusie**  
**Bianca Illich**  
**Catherine Porter**  
**Carmela Davis**  
**Melba LaRose**

Music by  
**Skip La Plante**

14 Fifth Avenue  
Penn Station Powerhouse  
13th Street Theater  
Essex Street Market  
Elizabeth Street Garden  
Mulberry Street Community Center

Produced by  
**Barry Rowell**

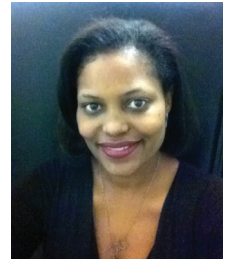
## Volunteer Production Assistants:

John Campo, David Castaneda, Dana Curran, Elson de Faria, Barry Rowell, and Dan Lane Williams.



**Ashleigh Awusie** is an actress, teaching artist from Harlem and recent graduate of the Royal Welsh College of Music & Drama. UK credits include: *Kasimir & Karoline* at The Gate Theatre in London, *Machinal* at the Richard Burton Theatre and the solo play, *ANANSI* at the Caird Studio Theatre in Wales. Other credits include: *Dreamprints: A Conversation with Harriet Tubman* at Syracuse Stage, *Ain't Never Been Easy* at Castillo Theatre, and *Shakespeare in the Boroughs* with the Public Theatre. Film: the indie feature, *Naz & Maalik* (Netflix, Hulu) and upcoming short, *Hush*.  
"Be great! Create on purpose"

**Carmela Davis** is a southern transplant, who has made her home in New York. She has lived in Brooklyn, the Bronx and Manhattan loving every second of life here in the Theatre community. In the covid era, she has worked with Cosmic Orchid reading P.A.B. as a Zoom series. Pre-covid, her last project was *After the Wall* with New York Artists Unlimited at the HOWL! Happening in the East Village. That project illuminated all the ways 'Walls' have separated/othered humans from each other since the beginning of time. She's performed in bi-lingual plays like 'Song of the Simple Truth' about Julia DeBurgos, reimagining's of fairy tales *Little Red*, *Girl from the Hood*, talk shows 'Dishin with Tish' and vaudeville recreations *Voice of the Town* across the Northeast and New England at the Nuyorican Poets Café, Henry Street Settlement, the Wadsworth Atheneum Museum of Art, HERE and many Universities, community center and library stages. Not to mention a couple of film and TV roles, too!



**Bianca Illich** is one of the most well-known and versatile actresses in Bulgaria. After graduating from the National Academy for Theater and Film Arts, she began her professional career in Theater and Television. Among her notable theatrical credits: Shakespeare's *A Winter's Tale*, *Look Back in Anger* – John Osborne, *The Seagull* – Anton Chekhov, *Dinner for Schmucks* – Francis Weber, and *Miss Julie* – August Strindberg. She is also well-known to the Bulgarian audience from her popular character Super Bianka on the national television prime-time program, *Ivan & Andrey's Show*. Before coming to the US, she was the TV host of *The Bachelor*. Shortly after her arrival in New York, she became a student at the two year Conservatory Program at the prestigious Lee Strasberg Theater and Film Institute. She has since gone on to direct the musical *Don Juan Around the World* in 2013 produced by Nantucket Ballroom at The Dreamland Theater on Nantucket Island. Her production was such a success that she was invited back to direct the 2014 Dreamland production *Mystery on the Orient Express*. In 2015 she directed Nantucket ballroom most ambitious project *The Picture of Dorian Gray* in which the veteran actor John Shea plays the lead role.

**Melba LaRose** is a veteran actress-playwright-director of stage, film, and television. She is Artistic & Administrative Director of NY Artists Unlimited, a 25-year old multicultural company dedicated to taking professional theatre to underserved audiences. Debuting in camp theatre as the lead in Jackie Curtis's *Glamour, Glory & Gold*, she went on to tour internationally with the Obie-winning NY Street Theatre Caravan, and was a member of Lonny Chapman's Group Repertory Theatre, LA. She created the International CringeFest/Bad Plays Festival and Downeast Arts Center. Melba holds a Who's Who Lifetime Achievement Award and a NY Acker Award for contributions to avant-garde theatre. Member: League of Professional Theatre Women, International Network for Contemporary Performing Arts (ietm), Dramatists Guild, AEA, SAG-AFTRA.



**Caiti Lattimer** is a New York based actor & poet. Her art is rooted in devised work, immersive theatre and dance theatre. You might have seen her before in Peculiar Works Project's *In Her Words: 2 Jane Jacobs*, *Afterparty: The Rothko Studio*, *Androboros*, and *Son of Cock Strong*. Caiti trained at the John DeSotelle Studio, The Actors Movement Studio Conservatory, Headlong Dance Theatre, and The University of the Arts (BFA). She is a certified teacher of the Williamson Technique for Movement and has taught at the John DeSotelle Studio and the Sovereignty School for Love. [www.CaitiLattimer.com](http://www.CaitiLattimer.com)

**Catherine Porter** has served as co-artistic director, producer, writer, director, teaching artist, and/or actor in hundreds of site-specific plays and large-scale performance events with Peculiar Works Project since 1993. She has performed many leading roles in Peculiar Works' productions; appeared Off Broadway with En Garde Arts in Mac Wellman's award-winning *Crowbar*; and acted with such Off-Off companies as Drama League, La MaMa ETC, Concrete Temple Theatre, Flux Theatre Ensemble, Dixon Place, Theatre Askew, TOSOS, The Forge, and Aisling Arts. Catherine's alter ego is Director of Operations for the Scherman Foundation. Previously, she was Director of Development for the renowned downtown performance space, Dixon Place, where she also served as Finance Director and Interim Executive Director. Prior to that, she was Coordinator of Individual Giving and Special Events for HERE Arts Center in NYC, and she co-founded the multi-disciplinary art and politics series, stART, at Judson Church. A Texas native, Catherine graduated from Texas Christian University with a BFA in Theatre. She is a member of Actor's Equity Association, a board member of the Alliance of Resident Theatres/New York and Concrete Temple Theatre, and has served as Treasurer and Co-President of the League of Professional Theatre Women.



**Ralph Lewis** (Director) creates original performances as co-founder of the OBIE and NYIT award-winning Peculiar Works Project. Most recently, he directed *Fengar Gael's Smile Like A Knife* (Ego Actus) and his virtual tour, *Behind the Curtain* (Untapped Cities), both presented on Zoom, and *Language Games* is his first direct-to-video project since the 2005 documentary *Welcome Aboard the Tripbox*. Pre-pandemic creations include *Afterparty: The Rothko Studio* (222 Bowery); *2 Jane Jacobs* (Cherry Lane Theater); *Planet X* ([Re]Happening Festival, NC) and two Climate Change Theater Actions. He also directed America's first play, *Androboros*, twice (Francis Tavern Museum, Overthrow Boxing Ring), as well as terrific works by William M. Hoffman, Megan Terry, Larry Gelbart, Rochelle Owens, Tom Murrin, Hallie Flanagan, Dostoevsky, Aristophanes, and Dr. Suess, among others. When not making theater, Ralph lives in a 200-year-old Federal house on the Bowery and volunteers with the Bowery Alliance of Neighbors, NYC Loft Tenants, and CB3's Arts Task Force. AEA, SAG/AFTRA, LCT Directors Lab.

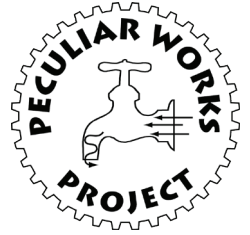
**Heather Olmstead** (Stage Manager) is an AEA Stage Manager. Favorite NYC productions include *Floydada*, and *Manna-hata*, with Peculiar Works Project; *On Striver's Row* and *Injunction Granted* at Metropolitan Playhouse; *Your Invisible Corset* and *Messenger#1* with Hunger and Thirst; *And to the Republic* with Guerrilla Shakespeare Project; *Coping* in the 2015 New York International Fringe Festival and Fringe Encore Series.





**Skip La Plante** (Composer) invents, builds, composes for, performs on and teaches with musical instruments built from trash. He co-founded the composer's collective MUSIC FOR HOMEMADE INSTRUMENTS in 1975. He has had about 200 compositions performed professionally, many for MFHI and most of the rest composed for theater and modern dance companies in NYC. He has created somewhere between 200 and 300 instruments. 180 windchimes (including all used in this production) will be on exhibit at Flushing Town Hall April 5-14. Proceeds from all chimes sold will benefit Flushing Town Hall, Materials for the Arts, Exploring the Metropolis and Outpost Artists Resources.

**Peculiar Works Project** (Producer) creates, develops and presents original multi-disciplinary performances that are accessible and fun for diverse audiences. Since 1993, we have challenged the conventions of medium, structure, and process in an alternative theatre context. We encourage collaboration, experimentation and a rebel spirit in artists by providing them with the tools and opportunities necessary for artistic growth. We perform in unconventional spaces, because we believe unique sites impact our work, this work in turn impacts the site, and audiences then experience both in surprising new ways. We have taken work directly into local communities by presenting site-specific productions in the streets of Greenwich Village and the East Village, in landmark buildings, gutted storefronts and other peculiar sites throughout NYC. PWP continues to bring unusual work to new audiences by building partnerships with other organizations. We have produced in conjunction with HERE Arts Center, the Lincoln Center Theater Directors Lab, Judson Memorial Church, The Drama League of New York, Art Office (Bulgaria), New Bulgarian University, and Dixon Place, among many others.



---

#### **Donors** (as of March 2021)

Our Peculiar Works projects are being made possible with public funds from NYSCA-A.R.T./New York Creative Opportunity Fund (A Statewide Theatre Regrant Program), and private funds from The Ken Glickfeld and Kris Hall Foundation, the Dime Community Bank Fund for NYC Theatres, a program of the Alliance of Resident Theatres/New York, the Mental Insight Foundation, and the Indie Theater Fund's Big Mini Give and Take.

**Iconoclast (\$500+):** Eric Jensen, Jeffrey Kazin, Ralph Lewis, Christopher Pennington, Toni Sonet, Barbara Yoshida

**Eccentric (\$250+):** Christopher Burney, Ellie Covan, Chris Harcum, Jonathan Harrison, David Herskovits, Philip Lindo, Felipe Ossa, Sally Young

**Oddball (Up to \$100):** Rhoshena Allen, Adam Auslander, Jim Baldassare, Michele Campo, Ruth L. Cohen, PH.D., Magie Dominic, Gillien Goll, Carle V. Groome, Stefan Hagen, Russ Kane, Gilda Pervin, Anne Phelan, Renee Philippi, Maxine Phillips, Ruth Rauch, Sumayyah Samaha, Robert Sikoryak

**Donations** to Peculiar Works are always welcome and **completely tax-deductible**. If you'd like to support our work, send your check, made out to Peculiar Works Project, Inc. Or, if you'd prefer to donate with a credit card, you can go to our website and make a donation through Network for Good at [peculiarworks.org](http://peculiarworks.org).

#### **Peculiar Works would like to extend a very special thanks to...**

Municipal Art Society of New York (MAS), Ianna Angelo, and Jacqueline Muallem; Village Preservation; the Cherry Lane Theater; Simeon Bankoff and the Historic Districts Council; Justin Rivers and Untapped New York; and especially Barbara Yoshida.